

STANISCI DESIGN

WOOD RANGE HOODS

www.wood-hood.com

C-Series, CHWHB Hood
Naples Kitchen & Bath, Naples, FL

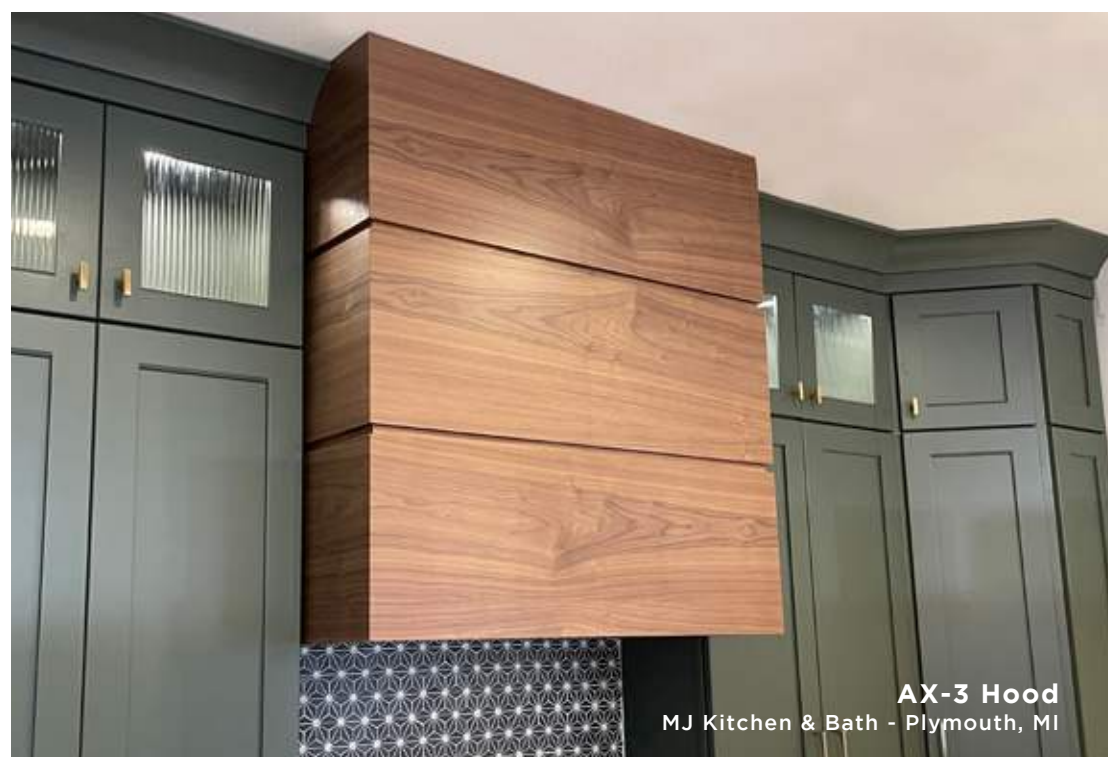


ARA Hood
StarMark Cabinetry - Sioux Falls, SD

STANISCI DESIGN WOOD RANGE HOOD
Ashland (A Series)



BHW Hood
Rhode Island Kitchen & Bath - Warwick, RI



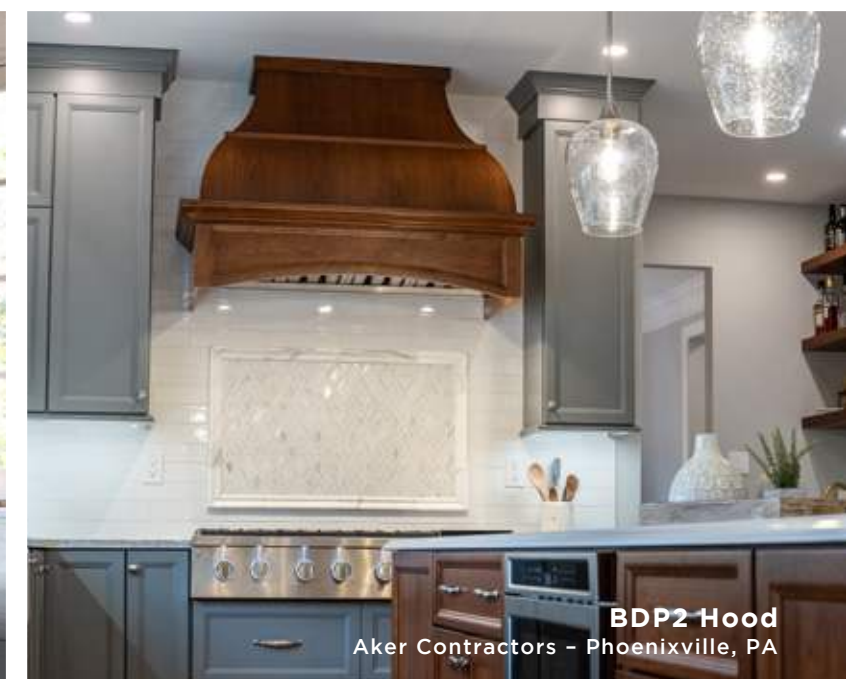
AX-3 Hood
MJ Kitchen & Bath - Plymouth, MI

STANISCI DESIGN WOOD RANGE HOOD
Axton (AX Series)



BDP1 Hood
Coastal Cabinet Works (Ally Young) - Plainview, NY

STANISCI DESIGN WOOD RANGE HOOD
Birmingham (B Series)



BDP2 Hood
Aker Contractors - Phoenixville, PA



BSS Hood w/ custom chimney extension
Amoroso Cabinets - Tampa, FL

STANISCI
DESIGN

www.wood-hood.com



BX Hood w/Custom Applied Hardwood Wrap
KraftMaster Renovations - Chatham, NJ



BXHB Hood
Ultracraft Cabinetry - Liberty, NC

STANISCI DESIGN WOOD RANGE HOOD

Bristol (BX Series)



CPL Hood
Hollywood Cabinets - Shelby Twp, MI



CHWHB Hood
Red Oak Remodeling - York, PA



CHWHB Hood
Hinman Construction - Ballston Spa, NY



BXVSS Hood
Kashian Brothers - Wilmette, IL

STANISCI DESIGN WOOD RANGE HOOD

Britney (BXV Series)



CPL Hood w/#2 Simple Molding
Integrated Kitchens - Walnut Creek, CA
w/ Julie Cheshire Photography

STANISCI DESIGN WOOD RANGE HOOD

Cambridge (C Series)

STANISCI
DESIGN

www.wood-hood.com



CXHW Hood
KraftMaster Renovations - Chatham, NJ



E300 Hood
Kitchen Central - Austin, TX



E300RS Hood
Stonebreaker Builders - Marco Island, FL

STANISCI DESIGN WOOD RANGE HOOD

Charlotte (CX Series)



DDP1 Hood w/Plinths & Custom Corbels
Hollywood Cabinets - Shelby Twp, MI



DDP1 Hood w/Plinths & Custom Corbels
Hutch & Home - Beaver Falls, PA

STANISCI DESIGN WOOD RANGE HOOD

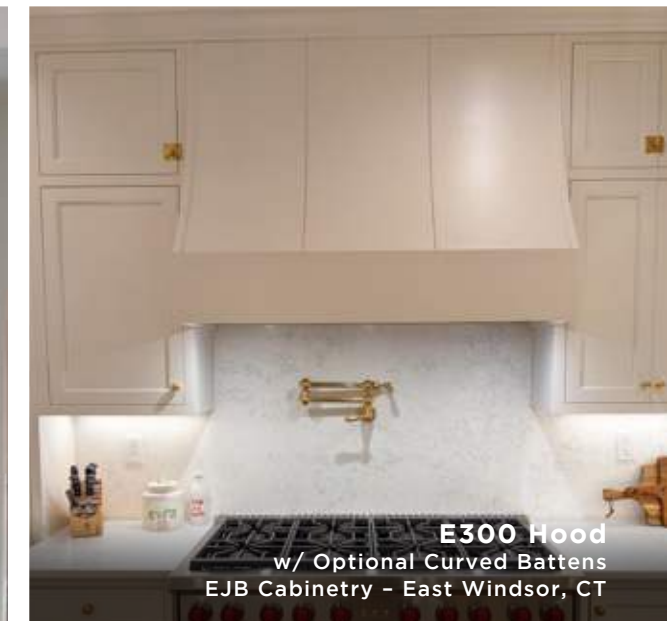
Dalton (D Series)



E300 Hood w/ Optional Applied Molding Wrap
Hollywood Cabinets - Shelby Twp, MI

STANISCI DESIGN WOOD RANGE HOOD

Eastland (E300 Series)



E300 Hood
w/ Optional Curved Battens
EJB Cabinetry - East Windsor, CT

STANISCI
DESIGN

www.wood-hood.com



EHW Hood
Kitchens by Charles Weiler - Lahaska, PA



FX200PL Hood w/ #2 Simple Molding
EJB Cabinetry - East Windsor, CT

STANISCI DESIGN WOOD RANGE HOOD
Fanfare (FX200 Series)

STANISCI DESIGN WOOD RANGE HOOD
Foxcote (FX300 Series)



ESS Hood w/ Brushed Brass Coated (BBC) Baffle Base
Kitchen Art, Inc. - Jacksonville, FL



E Hood Standard Base
ProSource Wholesale - Placentia, CA



FX300BPUP 1-2 Hood
Red Oak Remodeling - York, PA



FX300 Hood w/ Optional Battens
EJB Cabinetry - East Windsor, CT



FX300BPUP 2-1 Hood
CS Kitchen & Bath Studio - Lincoln, NE

STANISCI DESIGN WOOD RANGE HOOD
Elevation (E Series)

STANISCI
DESIGN

www.wood-hood.com



GHW Hood
MJ Kitchen & Bath - Plymouth, MI



GTDP2 Hood
Kitchen by Julie Deuble
w/ Kim Smith Photography



GTSS Hood
Sync Design - Watersound, FL



G Hood Standard Base
Red Oak Remodeling - York, PA



G Hood Standard Base
Quaker Maid Kitchens of Reading - Reading, PA



**GT Hood Standard Base w/ Optional
Applied Removable Panel (ARP)**
EJB Cabinetry - East Windsor, CT



GT Hood Standard Base
VanPolen Custom Cabinets - McBain, MI

STANISCI DESIGN WOOD RANGE HOOD
Georgetown (G Series)
*Designed for 8' ceiling applications

STANISCI DESIGN WOOD RANGE HOOD
Thompson (GT Series)
*Designed for 9' ceiling applications

**STANISCI
DESIGN**

www.wood-hood.com



HRA Hood
Integrity Kitchens and Bath - Richboro, PA

STANISCI DESIGN WOOD RANGE HOOD
Hartford (H Series)



JRSS Hood
StarMark Cabinetry - Sioux Falls, SD

STANISCI DESIGN WOOD RANGE HOOD
Jacksonville (J Series)



H2RA Hood
Design Line Kitchens - Seagirt, NJ
w/ Nettie Einhorn Photography



H2 Hood Standard Base
Design Line Kitchens - Seagirt, NJ
w/ Nettie Einhorn Photography

STANISCI DESIGN WOOD RANGE HOOD
Huntington (H2 Series)



L Hood Standard Base
Premier Homes - Holcomb, KS

STANISCI DESIGN WOOD RANGE HOOD
Lexington (L Series)

STANISCI
DESIGN

www.wood-hood.com



L2BPUP 2-2 Hood
Bath and Kitchen Galleria - Alpharetta, GA



STANISCI DESIGN WOOD RANGE HOOD
Naples (N Series)

NRA Hood
Builder Preferred Cabinetry - Maize, KS

STANISCI DESIGN WOOD RANGE HOOD

Lincoln (L2 Series)



MDP Hood
MJ Kitchen & Bath - Plymouth, MI



MS Hood
KraftMaster Renovations - Chatham, NJ

STANISCI DESIGN WOOD RANGE HOOD

Madison (M Series)



PPL Hood w/ Optional Battens
Kitchen Intuitions - Chatham, NJ
Starmark Cabinetry, Kraftmaster Renovations

STANISCI DESIGN WOOD RANGE HOOD

Plymouth (P Series)



PPL Hood w/ Optional Battens
EJB Cabinetry - East Windsor, CT

STANISCI
DESIGN

www.wood-hood.com



QBKT Hood
Design Line Kitchens - Seagirt, NJ
w/ Nettie Einhorn Photography

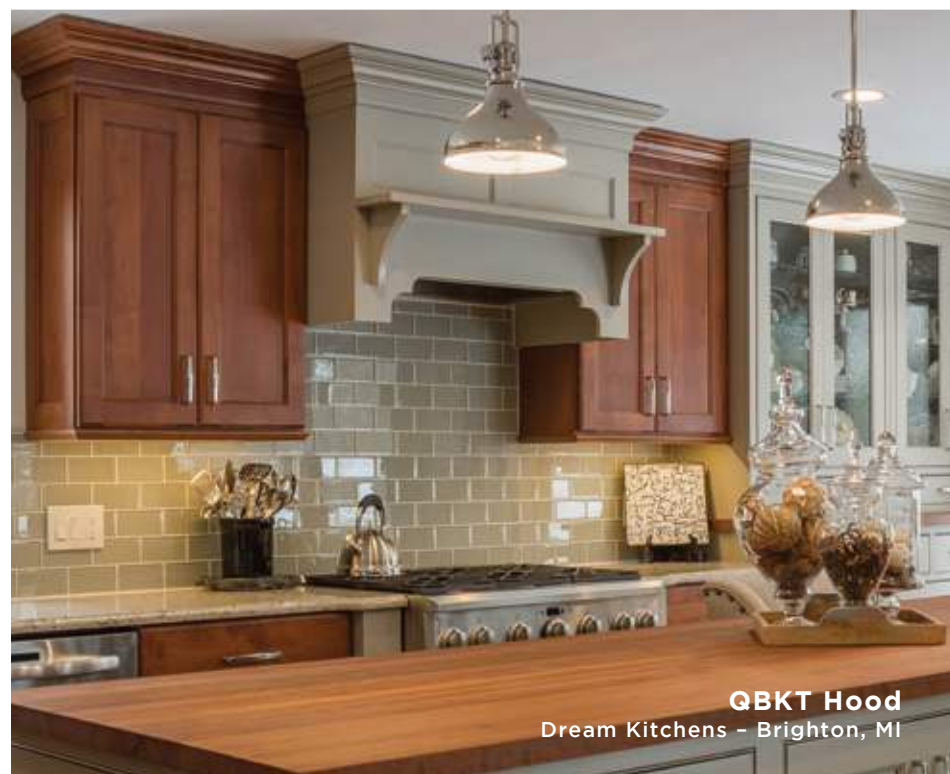
STANISCI DESIGN WOOD RANGE HOOD
Springfield (S Series)



SRA Hood
Cabinetry by Karman - Murray, UT



SB100 Hood
w/ Custom Bottom Molding Omitted
Dixie Kitchen Distributors - Knoxville, TN



QBKT Hood
Dream Kitchens - Brighton, MI

STANISCI DESIGN WOOD RANGE HOOD
Quebec (Q Series)



S Hood Standard Base w/#2 Simple Molding
Cabinetry by Karman - Murray, UT

STANISCI DESIGN WOOD RANGE HOOD
Saddlebrook (SB100 Series)

STANISCI
DESIGN

www.wood-hood.com



WRA Hood
Cabinetry by Karman - Murray, UT

STANISCI DESIGN WOOD RANGE HOOD
Washington (W Series)

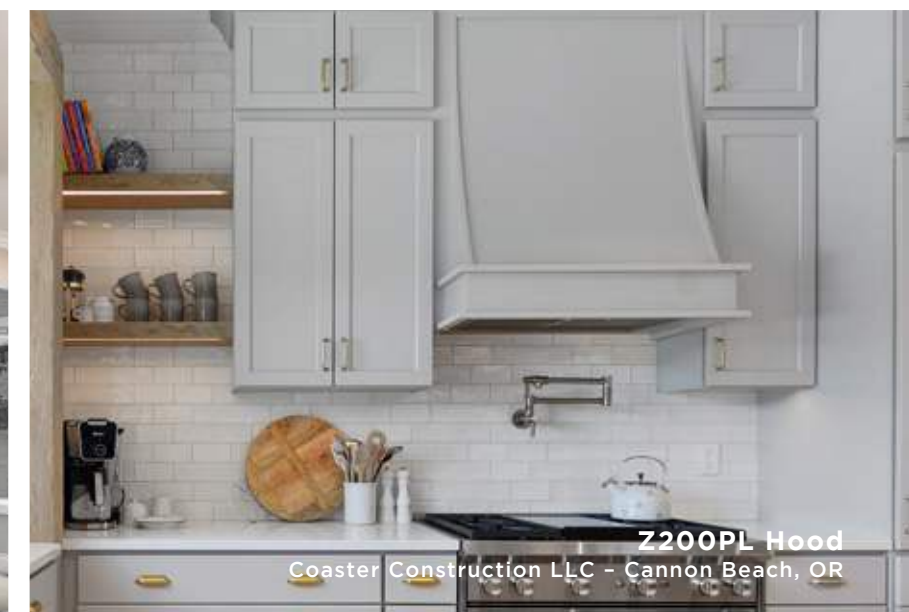


XRA Hood
Integrated Kitchens - Walnut Creek, CA
w/ Plush Image Corp. Photography

STANISCI DESIGN WOOD RANGE HOOD
Xavier (X Series)



Z200PL Hood
MJ Kitchen & Bath - Plymouth, MI



Z200PL Hood
Coaster Construction LLC - Cannon Beach, OR

STANISCI DESIGN WOOD RANGE HOOD
Zenith (Z200 Series)

STANISCI
DESIGN

www.wood-hood.com

PRODUCT GALLERY



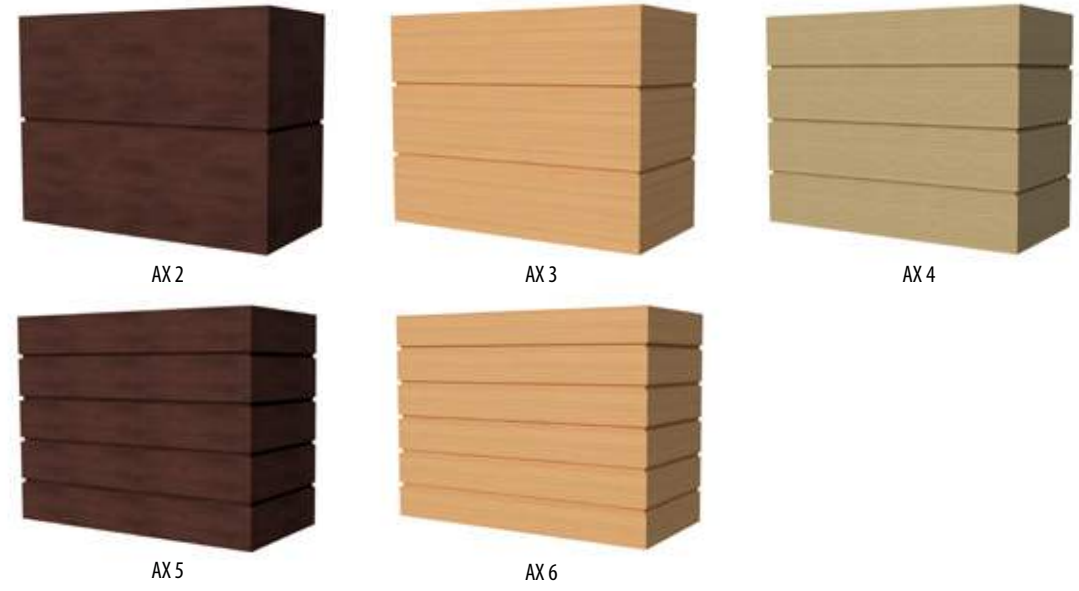
STANISCI DESIGN

WOOD RANGE HOODS

www.wood-hood.com

EHW Hood
Fine Line Kitchens - Chantilly, VA
w/ Kaan Ozturk Photography

Axton (AX Series) Free-Standing



Ashland (A Series) In-Series



Birmingham (B Series) Free-Standing



Birmingham (B Series) Free-Standing-continued



Bristol (BX Series) Free-Standing



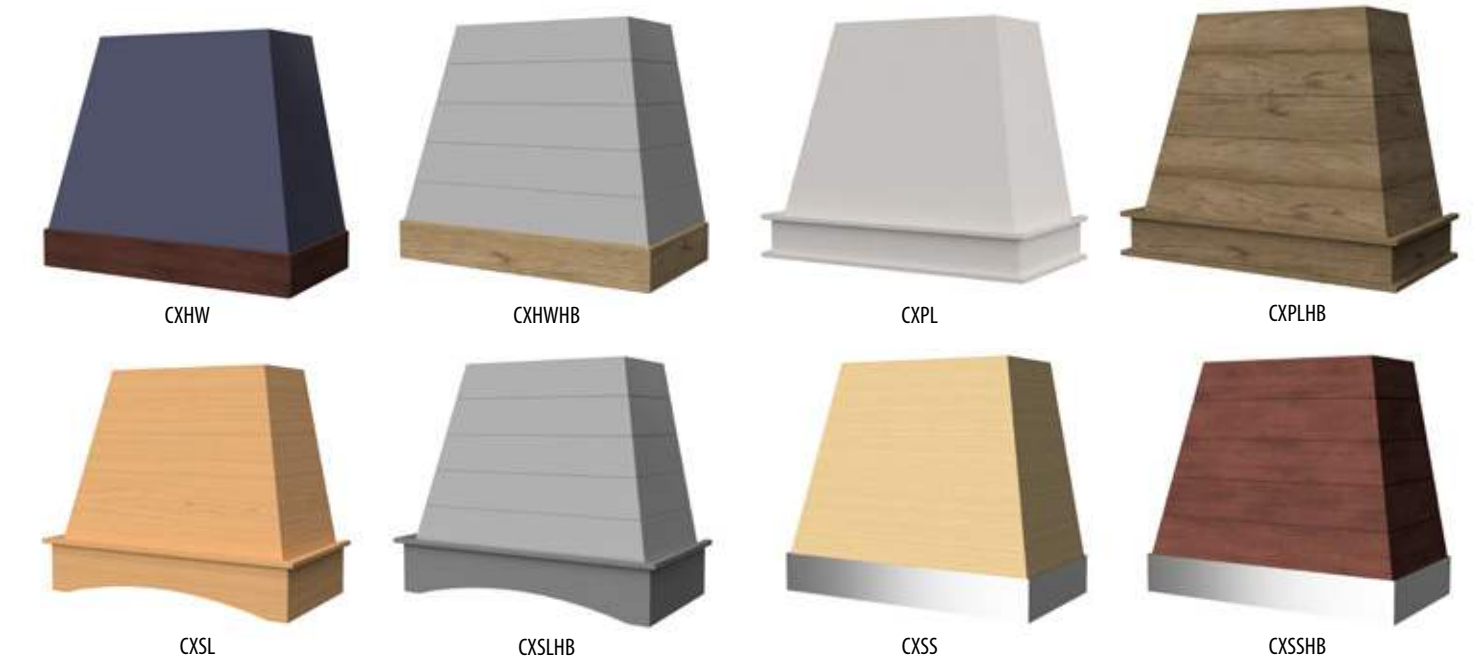
Britney (BXV Series) Free-Standing



Cambridge (C Series) Free-Standing



Charlotte (CX Series) Free-Standing



Dalton (D Series) Free-Standing



Dalton (D Series) Free-Standing - continued



DRA



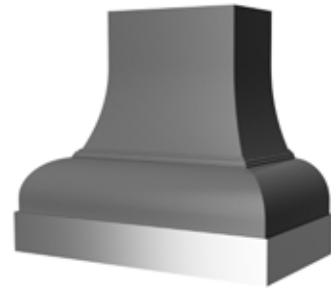
DDP2



DSL



DDP1



DSS

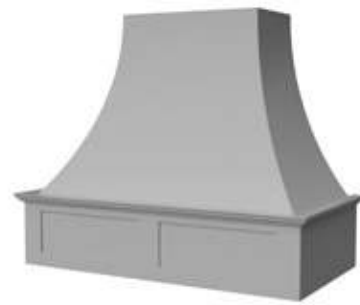
Elevation (E Series) Free-Standing



E



EHW



ERS



ERSS



ERA



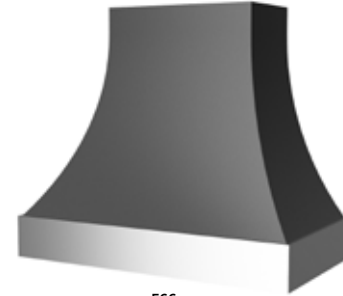
EDP2



ESL



EDP1



ESS

Elegance (E200 Series) Free-Standing



E200PL



E200HW



E200RS



E200RSS



E200RA



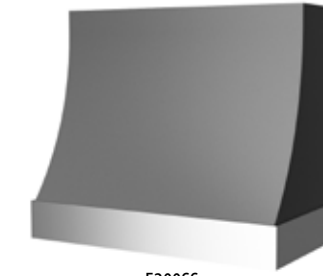
E200DP2



E200SL



E200DP1



E200SS

Eastland (E300 Series) In-Series



E300



E300RS



E300RSS



E300RA



E300DP2



E300SL



E300DP1

Erwin (ER200 Series) Free-Standing



ER200HW



ER200SS



ER300



ER400

Erie (ER300 Series) In-Series

Ericson (ER400 Series) In-Series

Erdahl (ER500 Series) In-Series

Ernston (ER600 Series) Free-Standing



ER500



ER600HW



ER600SS

Fanfare (FX200 Series) Free-Standing



FX200PL



FX200HW



FX200RS



FX200RSS



FX200RA



FX200DP2



FX200SL



FX200DP1



FX200SS

Foxcote (FX300 Series) In-Series



FX300



FX300BP-1



FX300BP-2



FX300BP-3



FX300UP-1



FX300UP-2



FX300UP-3



FX300BPUP 1-1



FX300BPUP 1-2



FX300BPUP 1-3



FX300BPUP 2-1



FX300BPUP 2-2



FX300BPUP 2-3



FX300BPUP 3-1



FX300BPUP 3-2



FX300BPUP 3-3

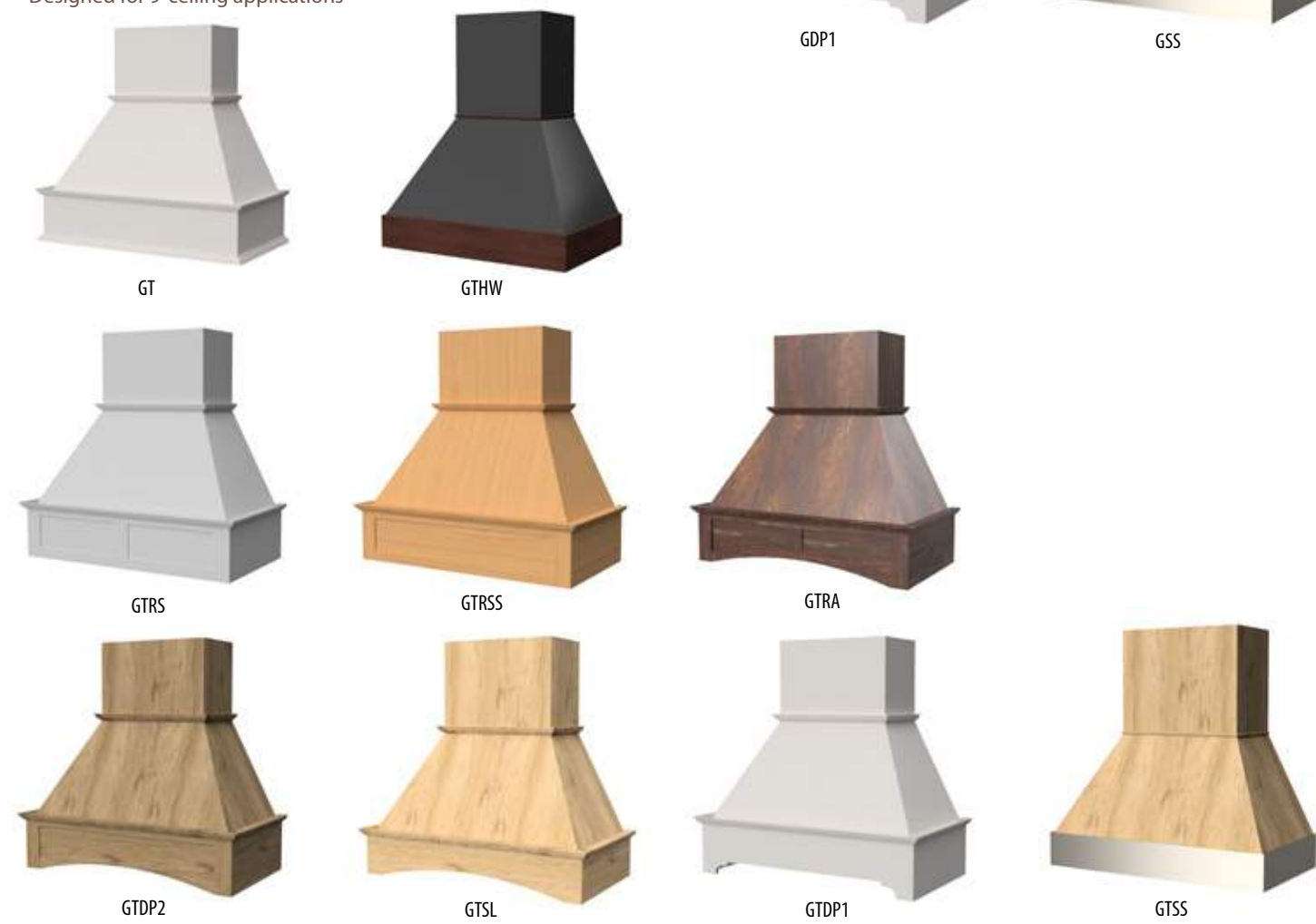
Georgetown (G Series) Free-Standing

*Designed for 8' ceiling applications



Thompson (GT Series) Free-Standing

*Designed for 9' ceiling applications



Hartford (H Series) In-Series



Huntington (H2 Series) In-Series



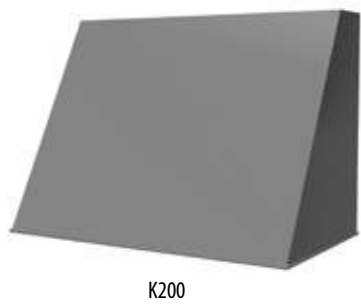
Island (I Series) Island Application



Jacksonville (J Series) In-Series



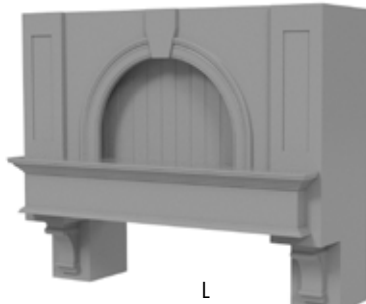
Kingston (K200 Series) Free-Standing



Kilgore (K300 Series) In-Series



Lexington (L Series) In-Series



Lincoln (L2 Series) In-Series



Madison (M Series) In-Series



Naples (N Series) In-Series



Plymouth (P Series) In-Series



Quebec (Q Series) In-Series



Saddlebrook (SB100 Series) In-Series



Springfield (S Series) In-Series



Washington (W Series) In-Series



Xavier (X Series) In-Series



Zenith (Z200 Series) In-Series





Mesh Liners (PML)



Baffle Liners (PBL)



*Gold Baffle Base
(Available in 17
color choices)*



ISL Liners



IPL Liners

RANGE HOOD LINERS

Stanisci Design carries a wide range of custom designed liners that cover all budgets and ventilation requirements. Our ventilators range from 300 CFM to 1200 CFM.

The Professional Baffle and Professional Mesh liners have dishwasher-safe stainless steel filters that cover most of the underside of the hood for easy cleaning. Stanisci liners come standard with LED lighting. All liners sold by Stanisci Design have a three year in-home warranty.



STANISCI
DESIGN

WOOD RANGE HOODS

www.wood-hood.com

E Hood Standard Base
Design Loft Cabinets - Charlotte, NC



E Hood Standard Base w/#2 Simple Molding
Forever Cabinets by Kendrick - Edgewood, IA

STANISCI DESIGN

AVAILABLE EXCLUSIVELY THROUGH
KITCHEN PROFESSIONALS



autokitchen



Chief Architect®
cabinet vision

700 South Glaspie Street
Oxford, MI 48371
(248) 572-6880
email: sales@wood-hood.com
www.wood-hood.com

